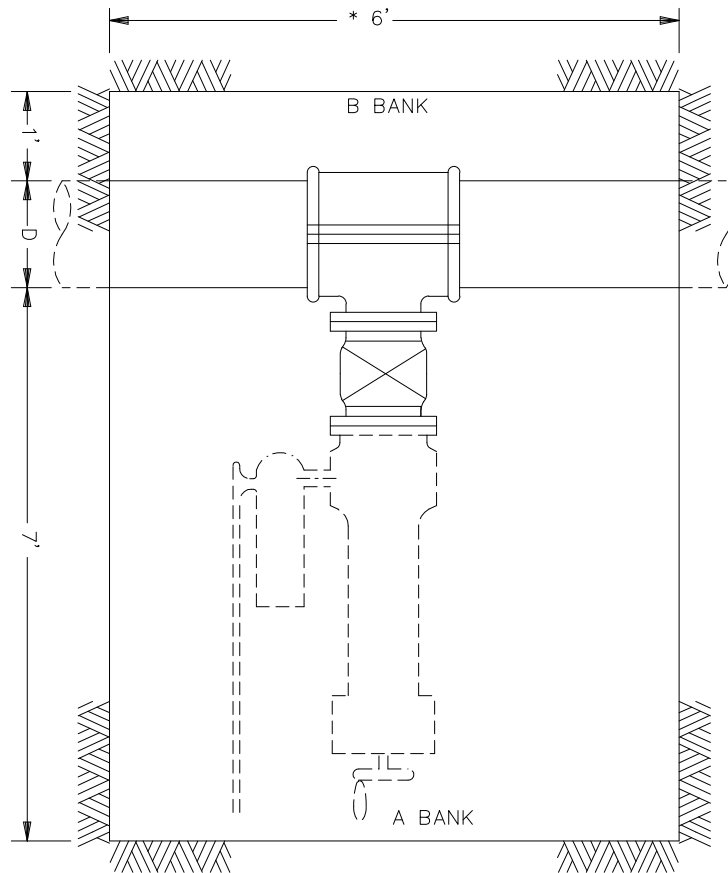




MISSOURI
AMERICAN WATER

FILE NO. _____
INDEX NO. _____
ISSUED DATE 08-2020
AMENDED DATE _____



NOTE#1: BOTTOM OF EXCAVATION TO BE 12" BELOW BOTTOM OF MAIN AND REASONABLY LEVEL.

THE B BANK MUST BE 12" FROM SIDE OF MAIN FOR ENTIRE WIDTH.

PLAN

- 1) THE EXCAVATION MUST COMPLY WITH ALL OSHA REGULATIONS.
- 2) IF PIPE BELL IS EXPOSED IN TAP HOLE OR OTHER OBSTACLES ENCOUNTERED, ENLARGE HOLE TO ADD AN ADDITIONAL 18" OF CLEARANCE FROM BELL OR OBSTACLE.
- 3) TAP HOLE MUST BE FREE OF WATER AND MUD TO ALLOW SAFE HANDLING OF HEAVY SLEEVES AND TAPPING MACHINE. 6" OF CLEAN GRANULAR REQUIRED IN BOTTOM OF EXCAVATION.
- 4) CONNECTIONS TO PUBLIC WATER MAIN WILL NOT BE MADE BEFORE METER PIT AND PIPING ARE COMPLETE AND PROPERTY LINE VALVE INSTALLED, UNLESS APPROVED BY AUTHORIZED COMPANY REPRESENTATIVE.
- 5) TAP HOLE MUST BE CLEAN ENOUGH TO REPAIR OR REWRAP ANY DAMAGE TO POLYWRAP.
- 6) PLUMBER RESPONSIBLE FOR THRUST BLOCK AGAINST BANK "B".
- 7) ANY DAMAGED POLYWRAP MUST BE REPAIRED.

DRG. #THD-3> SUBJECT TO REVISION WITHOUT NOTICE 08-28-2020

SERVICE CONNECTIONS – 3" AND LARGER TAP HOLE DIMENSIONS

PRINT AND READ DISCLAIMER
WITH ALL MAWC DRAWINGS

CAD /DISTRIB/DETAILS/METERBOX/METERBOX_20200821.DWG