



PENNSYLVANIA
AMERICAN WATER

WE KEEP LIFE FLOWING®

Earth's water goes around and around. We call this the "water cycle." The water cycle moves water from the Earth to the air and back to the Earth again.

PRECIPITATION: When water falls from the sky as rain, snow or sleet onto the Earth.

SURFACE RUNOFF: The flow of water—from rain, snowmelt or other sources—over land.

INFILTRATION: When the water sinks into the soil and finds its way to aquifers underground.

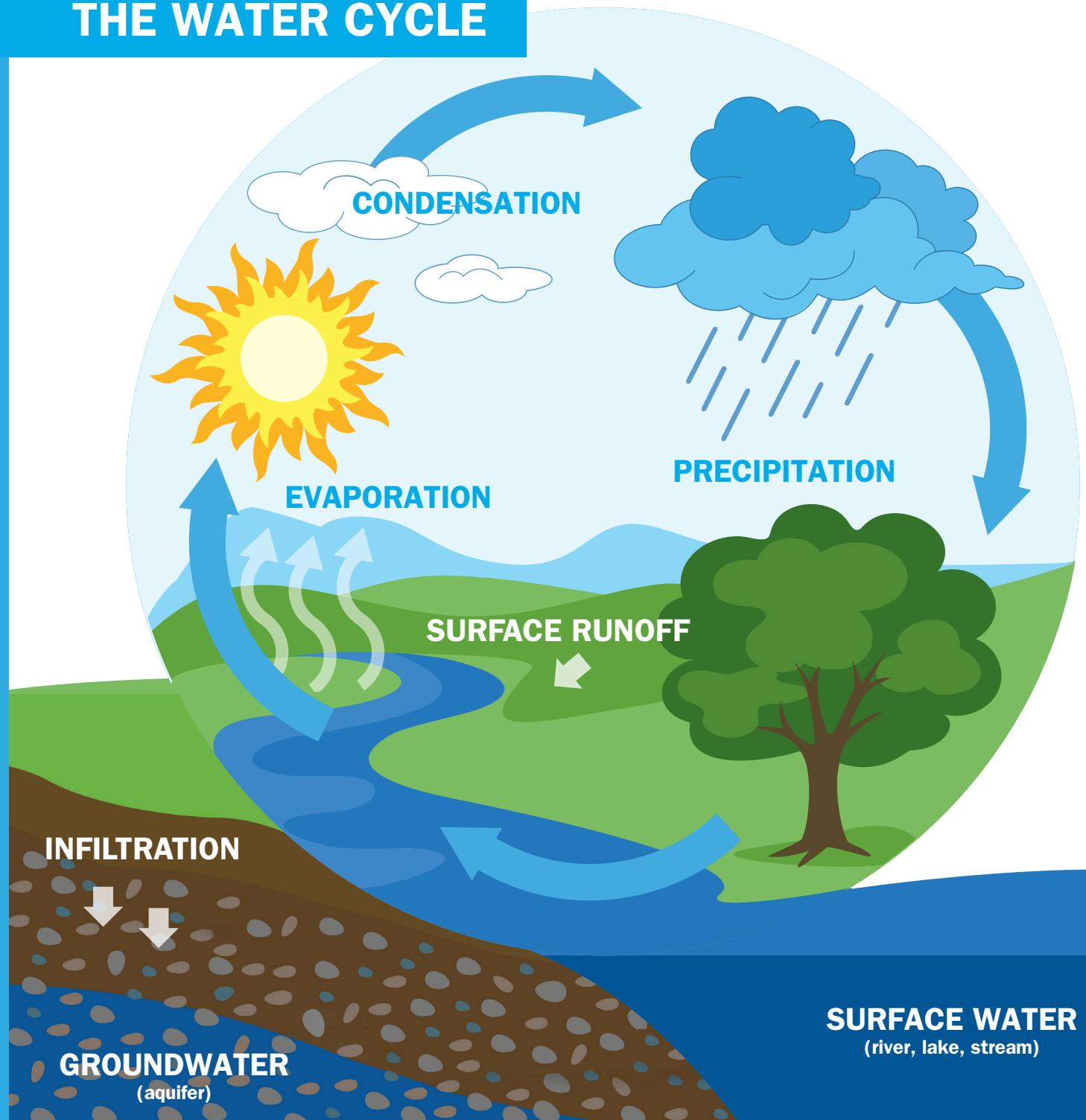
SURFACE WATER: A body of water on the surface of the earth, such as a river, lake or stream.

EVAPORATION: When the water turns into a gas.

CONDENSATION: When the water vapor condenses and forms precipitation.

**SERVICE.
ONE MORE WAY
WE KEEP LIFE FLOWING.**

THE WATER CYCLE



SURFACE WATER
(river, lake, stream)

GROUNDWATER
(aquifer)